

Onsite Wastewater Treatment

Ecoflo[®]

with **Compact
Coco Filter**



NEW!
even more compact !

*Adopt a more efficient system
Ideal for tight spaces!*

- Ease and quality of installation is guaranteed
- Adaptable to all types of exterior landscaping
- Reliable and requires no energy for treatment

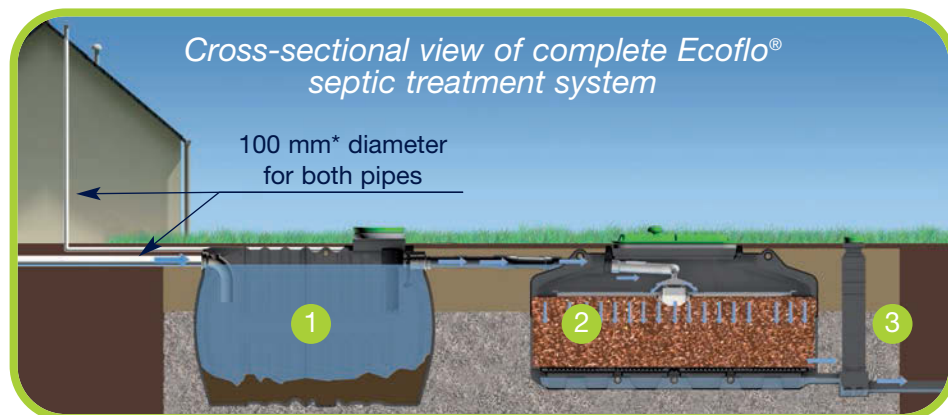


Ecoflo **5 to 15 PE** (HDPE)
septic treatment system

 **PREMIER TECH**
AQUA

Install our new Ecoflo® septic treatment system with compact coco filters

Simple and reliable, 3-step system



1. PURFLO® (primary treatment) wastewater septic tank

Indispensable, it can handle all domestic wastewater (except infiltration waters) and must have proper ventilation*.

With its integrated effluent filter (*Premier Tech Technology*), it traps all large materials and particles and protects the Ecoflo® biofilter. (*functioning primary and secondary ventilation)

2. Ecoflo® (secondary treatment) biofilter

Requiring no energy, pre-treated water gathers on the surface of the coconut fragments filtering media. The biofilter provides organic treatment, filtration and retention of pollutants until decomposition. At this stage, the effluent already conforms to regulations. The sampling chamber (a strongly recommended option) receives the treated water before releasing it.

3. Release of treated wastewater

In a system designed by engineers, treated wastewater is released by infiltration into the ground soil (if permeability allows), or by surface discharge that complies with all regulations.

An extraordinarily reliable system

Manufactured in France by (APC & Calona Purflo), Ecoflo® is designed to effectively purify domestic wastewater in any situation. Exceptionally compact and modular, this septic treatment system is specifically designed for tight spaces!

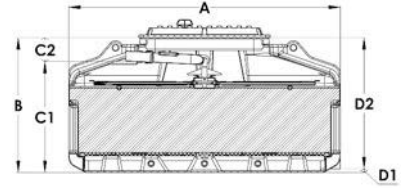
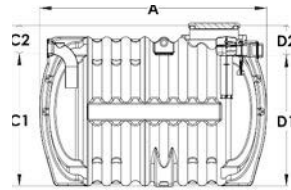


Installation of a complete Ecoflo® 5PE septic treatment system (wastewater tank and Ecoflo® biofilter)

All components are installed below ground; the cross-sectional view shown here is for your information only - These images are not contractual, and do not represent actual proposed systems. More details are provided on the Technical Specifications page. (*For 8 m³ septic tank: 110 mm diameter)

Technical Specifications

Complete septic treatment systems with **Ecoflo® biofilter** (specific wastewater septic tanks provided)

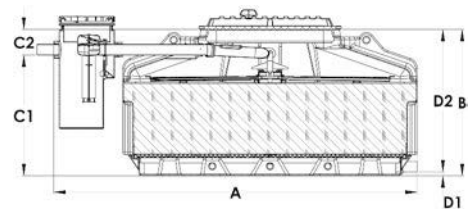
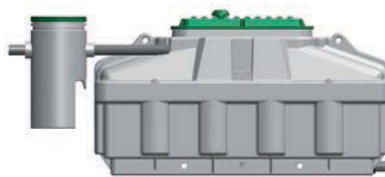


Specifications for a complete system	WASTEWATER SEPTIC TANK measurements in m; cover: 0.02 m, extension height: 0.15 m (optional)							Ecoflo® CP BIOFILTER measurements in m; cover: 0.18 m, extension height: 0.15 m (optional)						
	Capacity	(A) Length	Width	(B) Height of landfill*	(C1/C2) FEE**	(D1/D2) FES**	Weight (kg)	Capacity	(A) Length	Width	(B) Height of landfill*	(C1/C2) FEE**	(D1/D2) FES**	Weight (kg)
Ecoflo 5 PE/pp 3 m³	3m³	2.42	1.47	1.50	1.30 -0.20	1.27 -0.23	126	5 PE/pp	2.75	1.25	1.36	1.12 -0.24	0.05 -1.31	430
Ecoflo 10 PE (2 filters) 5 m³	5m³	2.48	1.89	1.86	1.68 -0.18	1.65 -0.21	161	10 PE/pp	2.75	2.50	1.36	1.12 -0.24	0.05 -1.31	2x430
Ecoflo 15 PE (3 filters) 8 m³	8m³	3.36	2.08	2.11	1.87 -0.24	1.75 -0.36	304	15 PE/pp	2.75	3.75	1.36	1.12 -0.24	0.05 -1.31	3x430
2V or 3V external power supply splitter		0.56	0.66	0.50	0.26	0.02	10	(1) TO BE INTEGRATED INTO THE PREPARATION FOR INSTALLATION: impact of a splitter on water levels and on the required extensions, lateral filter spacing (ensure a minimum of 50 cm between filters)						

*Measured from the bottom of the installation to the top of the open manhole; ** measured water level: from the bottom (positive number), then from the top of the open manhole (negative number) – Water level measurement based on a 100 mm Ø inlet/outlet, except for 8 m3 septic tank: 110 mm Ø. Ask us about accessories and peripherals. The measurements above are not contractual, and may vary +/- 3%.

Ecoflo® upgrade filters

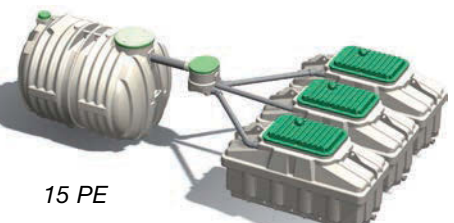
(Effluent filter chamber provided, wastewater septic tank not provided but required, conforming with Installation Guide)



Specifications for an upgrade filter (effluent filter chamber provided, wastewater septic tank not provided)	Ecoflo® CP UPGRADE FILTER with effluent filter chamber (integrated adjustable extension, height: 0 to 0.15 m) measurements in m; Ecoflo® CP: cover height: 0.18 m, extension height: 0.15 m (optional)					
	(A) Length	Width	(B) Height of landfill*	(C1/C2) FEE**	(D1/D2) FES**	Weight (kg)
Ecoflo 5 PE/pp biofilter (ref. 10D05PE-REHAB)	3.30	1.25	1.36	1.13 -0.23	0,05 -1,31	510

*Measured from the bottom of the installation to the top of the open manhole; ** measured water level: from the bottom (positive number), then from the top of the open manhole (negative number) - Ask us about accessories and peripherals. The measurements above are not contractual, and may vary +/- 3%. - Water level measurement based on a 100 mm Ø inlet/outlet, except for 8 m3 tank: 110 mm Ø.

NEW! Completely modular Ecoflo® systems



Choose A system perfectly tailored for every landscaping design!



You are guaranteed a quality, easy-to-install installation for any situation

- Compact and delivered to you ready-to-install, to optimize installation
- Perfect for new and renovated homes, with or without groundwater (0.6 m max)
- Ideal for replacing defective existing septic treatment system at the lowest cost (following the Installation Guide)



Adopt a "long-life" installation: 100% reliable and conforming with regulations in any setting

- Consistent and very effective results, evaluated under the most difficult conditions
- Designed for primary and secondary homes (*intermittent use*)
- Not affected by seasonal use or climatic variations, perfect for both primary and secondary dwellings
- Basic operation, processing requires no electro-mechanical devices or adjustment

Average results* for the Premier Tech Compact Coco Filter

**Raw wastewater test at 361¹ mg/l of TSS, 310¹ and 343² mg/l in BOD5.

¹-Average of 26 audits performed in compliance to the standard EN 12566-3 requirements.

²-Average of 16 audits performed with the most concentrated raw effluent in compliance with the standard EN 12566-3 requirements.

Parameters	Effluent output* (average)
TSS (mg/l)	13 ¹ (96,4%)
BOD5 (mg/l)	10 ¹ (97%)
	11 ² (97%)



Save money and protect the environment

- Doesn't require energy or electro-mechanical devices for processing
- Natural and recycled organic filtering media
- Renewable and recyclable at the end of its useful life (*quality compost*), without the need for additional landscaping

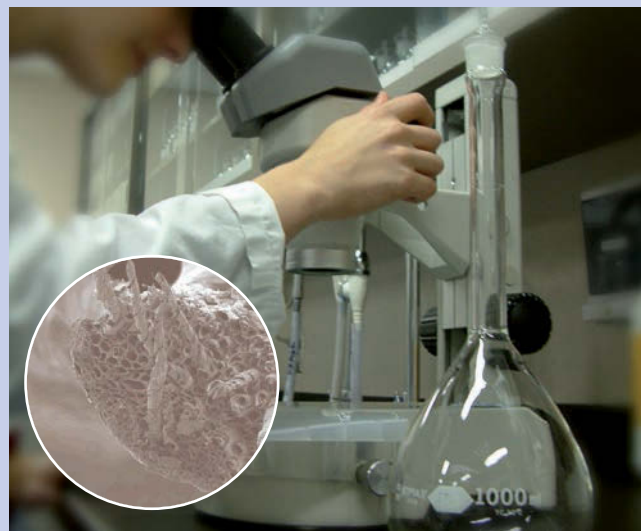


Take care of your property while protecting the environment

Cutting-edge Onsite Wastewater Treatment

After more than 20 years of R&D by our scientific team, the patented Premier Tech Compact coco filtering media was selected for its high purification rate and long expected lifetime. Using a patented supply and ventilation process, the calibrated coco fragments behave like highly responsive sponges, with a high absorption capacity (*5 times that of sand*) and a very large contact surface. This allows the embedded bacteria to provide a high purification rate in a limited volume, in any setting.

In North America, Premier Tech technology has recognized certification: BNQ (*Québec*) and NSF (*US*). In Europe, most require CE Marking and government approval (*France*).



Fully transparent system maintenance

The Compact Coco Filter requires annual Maintenance/Inspection*, to verify and optimize its operation. It doesn't require cleaning annually, only at the end of its useful life, or about every 10 years, when the used filtering media is extracted and replaced without the need for additional landscaping. The media is

then recycled as high-quality compost. To maximize installation life, personal safety and reliability of interventions, these operations must be performed by professionals trained in these products and accustomed to handling potentially difficult situations.



Computerized monitoring



Annual maintenance



Renewal (approx. every 10 years)

*Not included in the Maintenance Plan, cleaning out the septic tank, so that the sludge volume does not exceed 50% of the useful volume (about every 3-4 years, depending on use)



Premier Tech Aqua (APC and Calona Purflo) is one of France's market leaders in Onsite Wastewater Treatment, Water Storage, recovery of Stormwater and Pumping Station water. Premier Tech Aqua offers water professionals the most innovative, effective and durable solutions.

Our business unit has experienced continual growth since 1983, mastering the full cycle of design, manufacture and marketing of rotomolded and composite products. We also share our experience on a daily basis with companies around the world, through the transfer of skills and technology.

Premier Tech Aqua's mandate is to deploy our brands and products to the European market, together with those of Premier Tech.

- >> 26 million Euros in annual sales in 2011.
- >> 3,500 tonnes of HDPE processed.
- >> Over 120,000 homes equipped with our installations in the past 8 years.
- >> Our reputation and know-how is recognized around the world.

The information contained in this document is based on the latest information available at the time of publication and is designed to provide you with a general introduction to our products. We are continually improving our products and reserve the right to amend, add or change specifications and pricing without prior notice.

© Premier Tech, February 2012



To find out more: **PTAQUAPURFLO.COM**

ZA du Doslet - 35430 CHATEAUNEUF D'ILLE ET VILAINE - FRANCE
Tel. (33) 02 99 58 45 55 - Fax 02 99 58 37 66
Email: pta-purflo@premiertech.com

Adare Biocare Ltd

Tynedale House
Clonshire, Croagh,
Co Limerick

P: +353 (0) 61-395819

M: +353 (0) 87-254-9897

www.adarebiocare.com